



GPS



NCPA[®]
NATIONAL COMMUNITY
PHARMACISTS ASSOCIATION

Growth. Performance. Success.

2024 ANNUAL CONVENTION



Break-ins and Burglaries: Practical Strategies To Protect Your Pharmacy

NCPA 2024 Annual Convention and Expo
Columbus, Ohio

Speaker



John Clay Kirtley, PharmD, FAPhA
Executive Director
Arkansas State Board of Pharmacy

Disclosure Statement

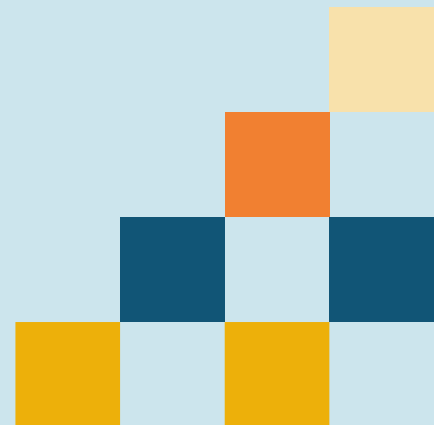
There are no relevant financial relationships with ACPE defined commercial interests for anyone who was in control of the content of the activity.

This presentation contains product names and images for educational purposes only. It is not meant to be an endorsement or advertisement of any particular product or product categories.



Pharmacist and Technician Learning Objectives

1. Discuss current trends for pharmacy break-ins and burglaries.
2. Review strategies for protecting pharmacies from drug losses in the event of a burglary or break-in.
3. Outline best practices for integrating theft deterrent systems in the pharmacy.



Why Are We Here?

- Who has had a drug loss in their career?
- A burglary?
- A robbery?
- Employee theft?
- What did you do about it?



Let's Talk Money

- Alprazolam - \$2.00 to \$6.00
- Xanax - \$1.00 to \$20.00
- Ambien (zolpidem) - \$2.00 to \$15.00
- Dilaudid (hydromorphone) - \$25.00 to \$50.00
- Fentanyl Patch - \$20.00 to \$70.00
- Methadone - \$8.00 to \$50.00
- Morphine - \$30.00 to \$50.00
- Oxycontin - \$10.00 to \$80.00
- Promethazine with Codeine Syrup – 1 pint - up to \$2500
- Tussionex - \$5.00 to \$40.00
- Hydrocodone (various Strengths) - \$5.00 to \$25.00



Let's Talk Math

Pharmacy (Legal) Dealer vs. Street Dealer

Oxycodone, OxyContin, Roxicodone, Methadone, Hydrocodone

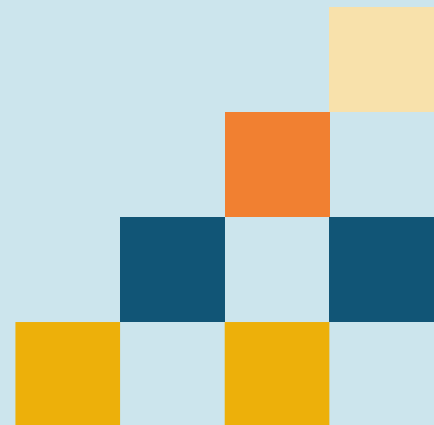
$$1 \text{ mg} = \$1$$

Do the Math

$$1,000 \text{ mg} = 1 \text{ gram}$$

$$1,000 \text{ grams} = 1 \text{ kg}$$

$$1 \text{ kg} = 1,000,000 \text{ mg} = \$1,000,000$$



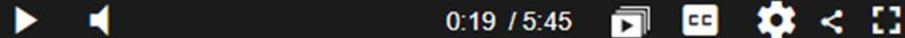
CRIME

Largest pharmacy burglary ring in DEA history ends with 42 indicted in Arkansas

by: [Alex Kienlen](#)

Posted: Aug 29, 2024 / 01:57 PM CDT

Updated: Aug 29, 2024 / 03:33 PM CDT



SHARE



LITTLE ROCK, Ark. – Officials said Thursday a multi-state pharmacy burglary ring investigation has led to 42 people being indicted in Little Rock.

The U.S. Attorney for the Eastern District of Arkansas Jonathan Ross said the 42 were involved in a ring that operated “from coast to coast” in burglarizing narcotics with a \$12 million street value from rural pharmacies. Ross said the group stole from 200 pharmacies in 31 states, 20 of which were in Arkansas.

[Little Rock DEA, other agencies arrest 18 in connection with rural pharmacy pill burglaries](#)

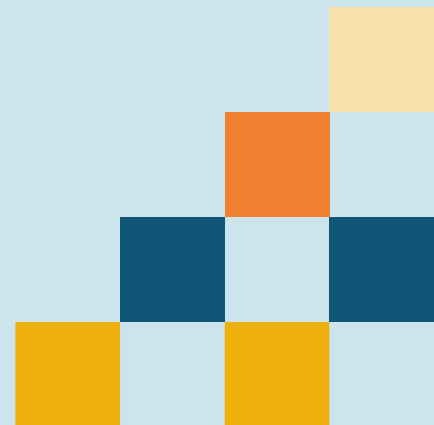


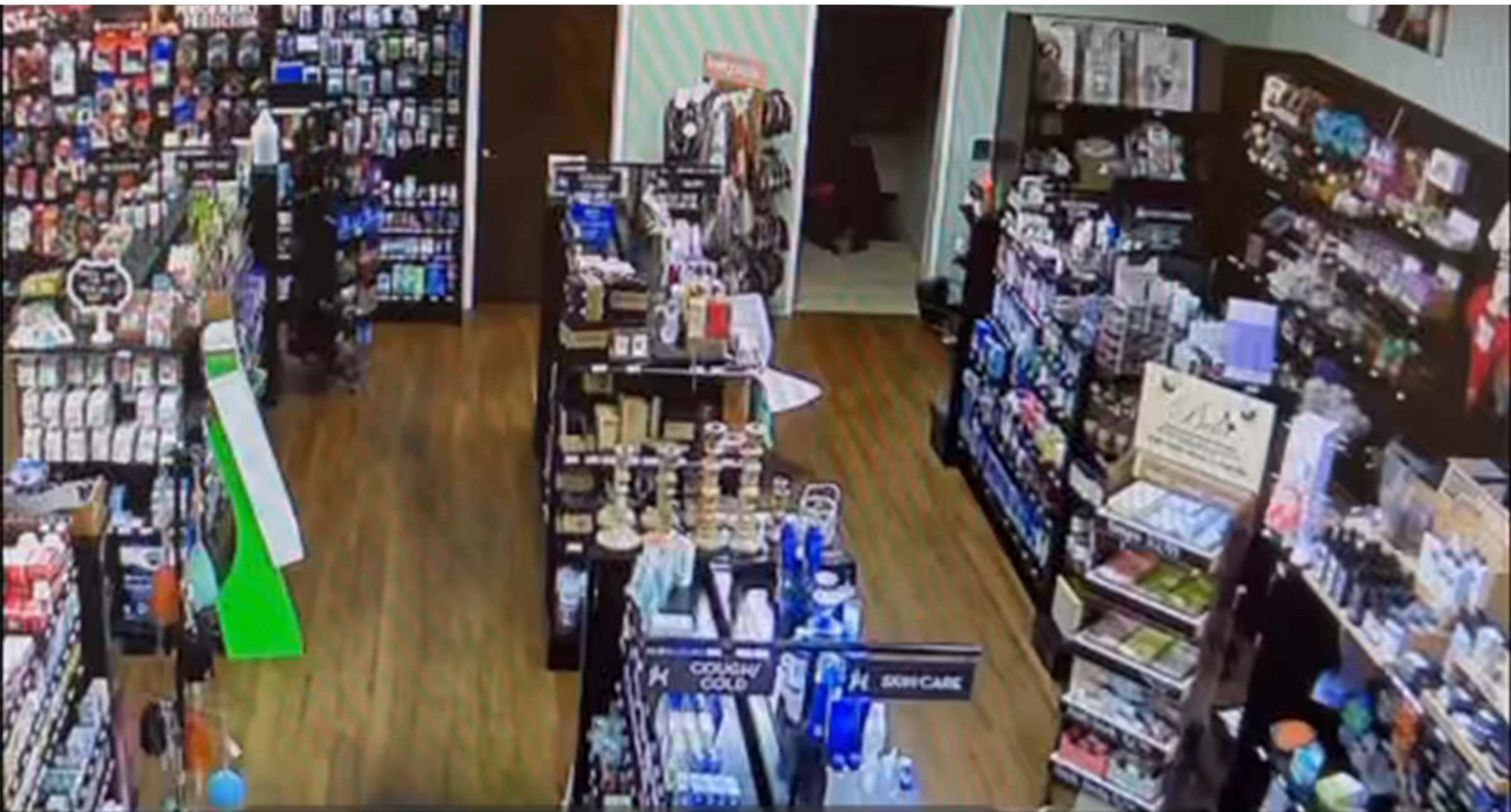
<https://www.kark.com/crime/us-attorney-dea-us-marshals-to-discuss-pharmacy-burglary-ring-in-little-rock/#:~:text=The%20U.S.%20Attorney%20for%20the,of%20which%20were%20in%20Arkansas.>

The Growing Problem

- Many states have seen a string of break-ins over the last few years.
- Most of this is focused on smaller, independent pharmacies often in small towns or rural areas.
- There appear to be organized groups that can utilize social media and tools such as Google map street view to explore possible targets and surrounding security concerns for this purpose.

#richoffmeds





Mission Impossible Theme

Possible Issues

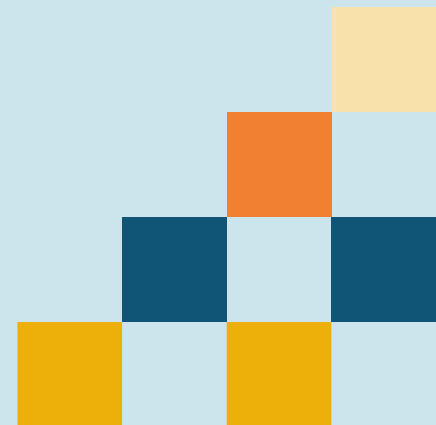
Many smaller pharmacies meet minimum security criteria which is simply a secured space. They:

- do not have alarm systems.
- do not have cameras.
- have adjacent businesses that are not secure!
- often have pictures on social media or websites that show pharmacy layout and possible security measures clearly.



Alarm Systems

- Who set it up? Residential or Commercial design?
- Motion Detection
 - Residential – often does not have motion detection at the level of your pets or your ceiling fans.
 - Commercial – motion detection ceiling to floor including behind counters.
- Window and door sensors? – **Drive Through Window?**
- Glass Break sensors?
 - Is the glass shattered or splintered with a punch tool?
- Power dependent or battery backup? For how long?
- Silent or audible?
- Phone line or cellular?



Camera Systems



- Are they visible?
- Where do they focus? Where will the crime occur?
 - Outside to see who is around?
 - Up front to watch customers?
 - Behind the counter to watch employees and the drugs themselves?
- Where is the monitor and the recording system?
 - Where is the main viewing computer?
- How often do you verify that it is recording and retrievable?
 - At least monthly if not weekly.



Surveillance Cameras?

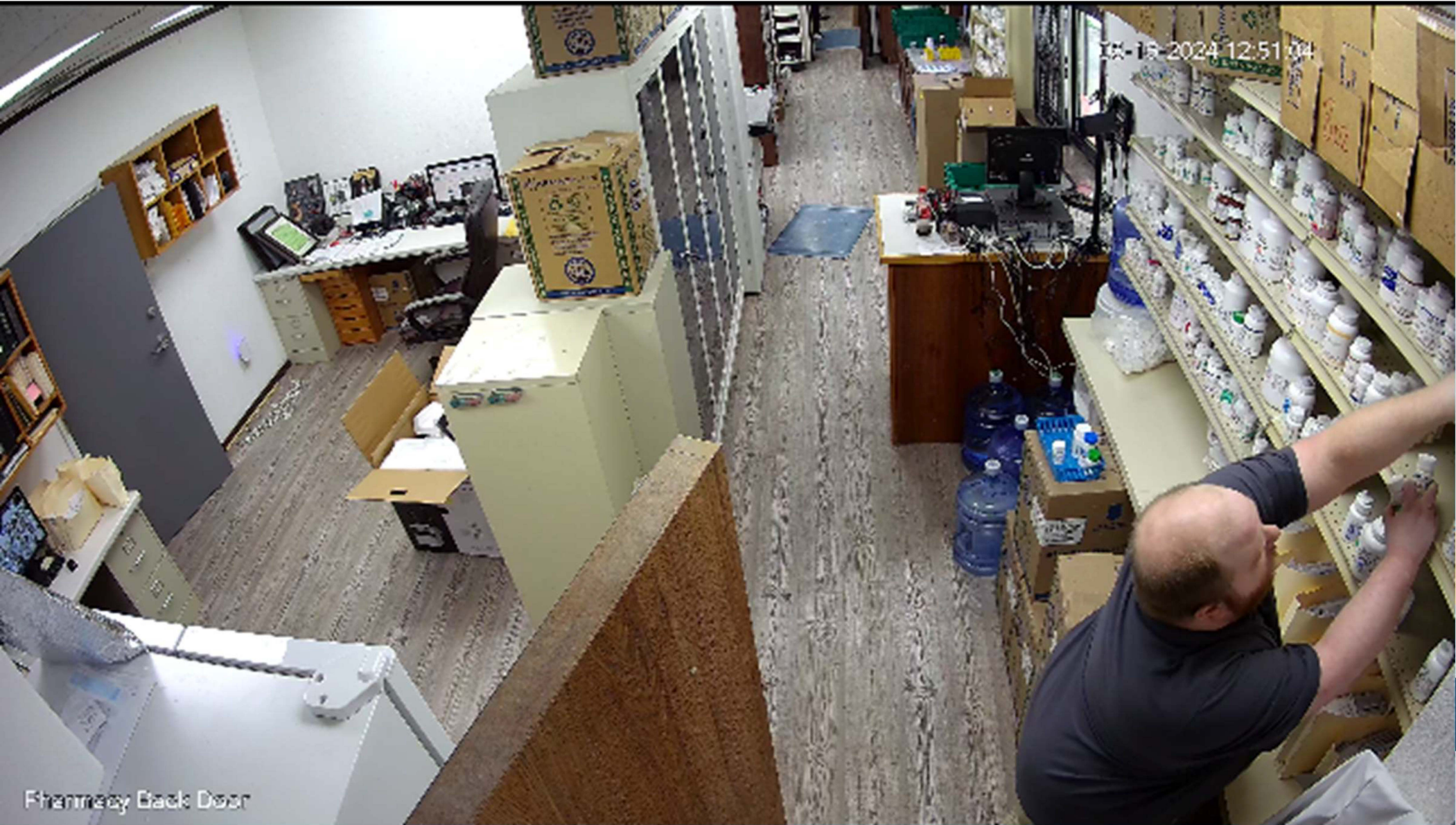


Pharmacy Back Room



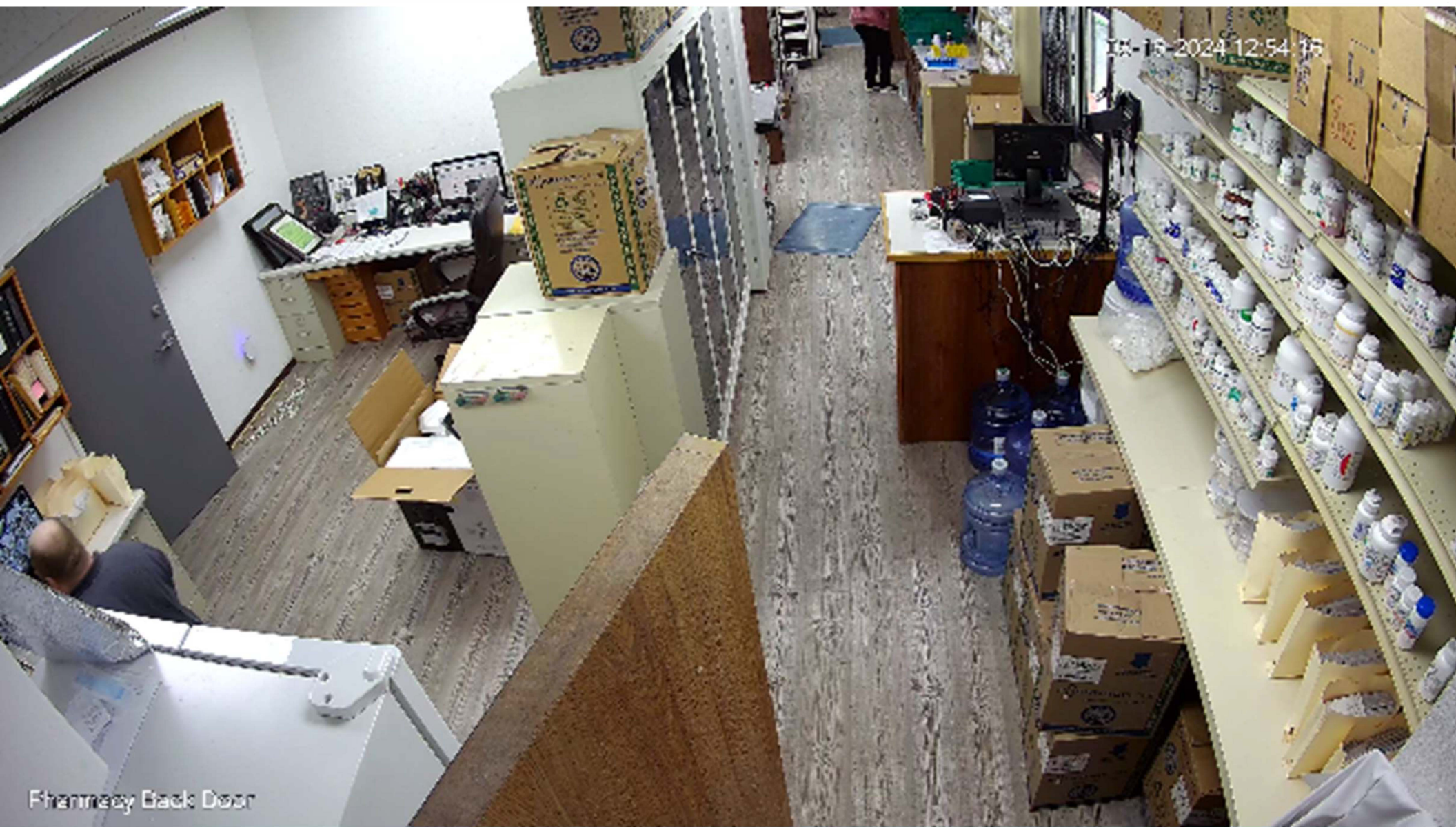
Pharmacy Filling Counter

12-15-2024 12:51:04



Pharmacy Back Door

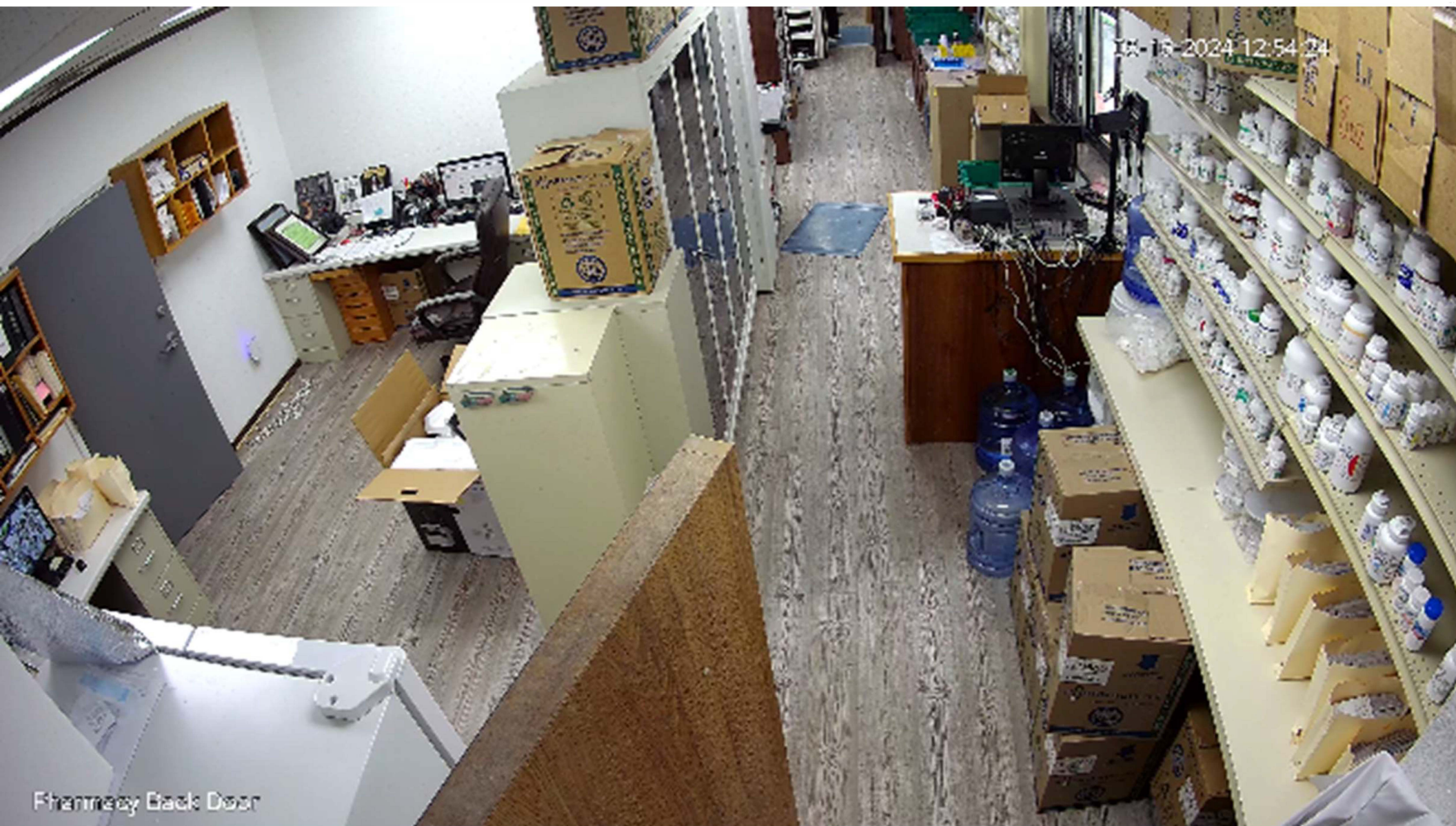
12-18-2024 12:54:15

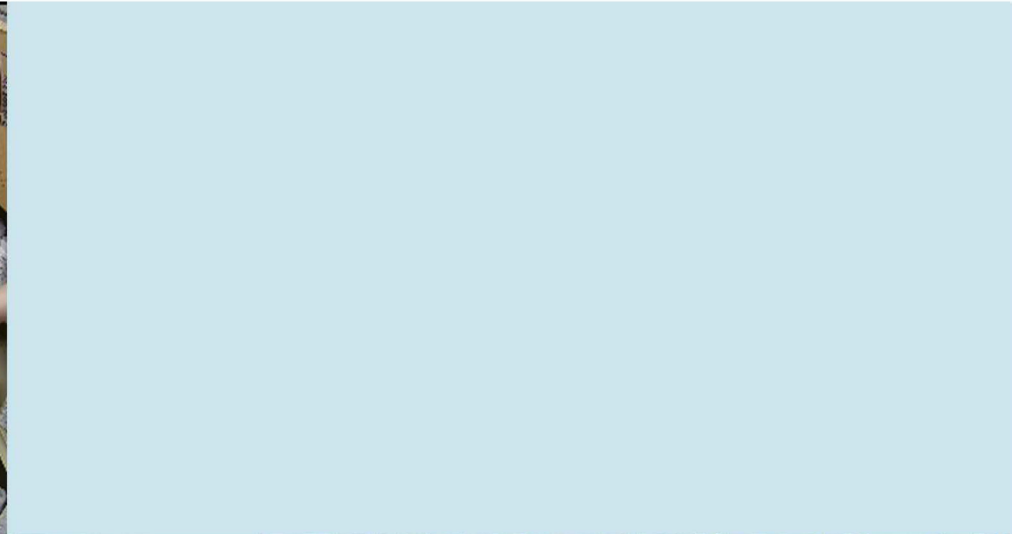
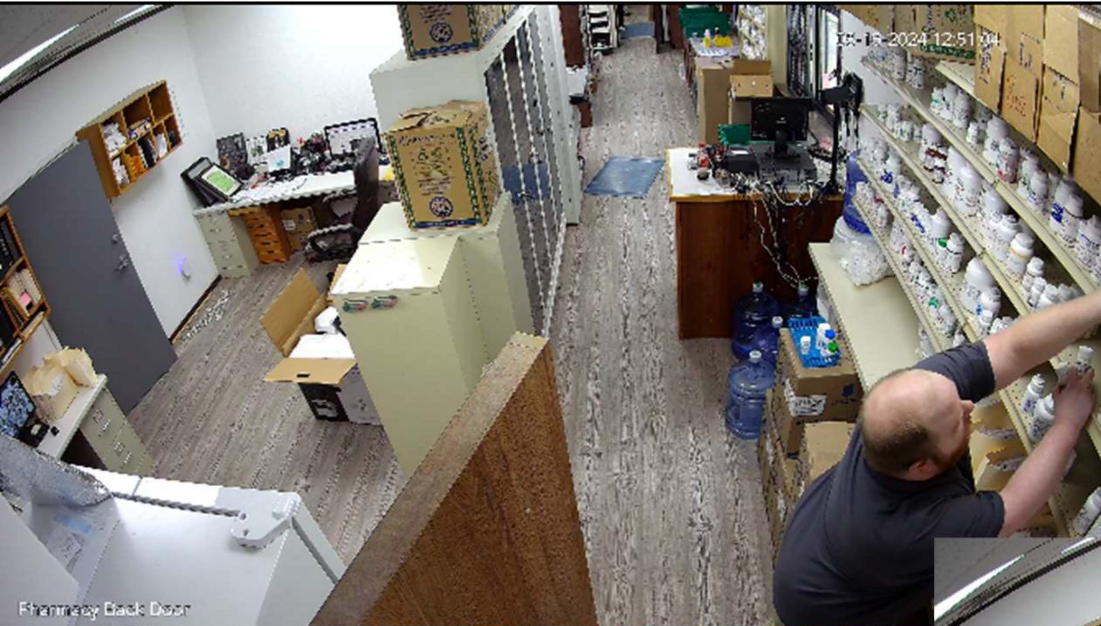


Pharmacy Back Door

IX-16-2024 12:54:24

Pharmacy Back Door





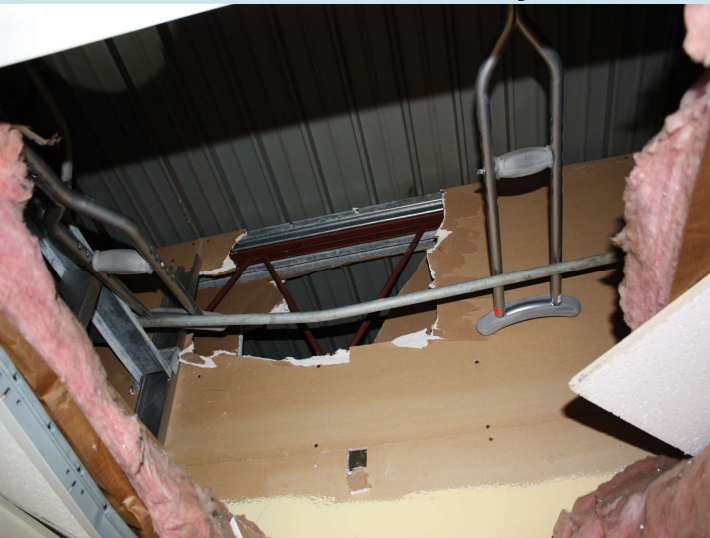
Fleming Back Door

Fleming Back Door

Fleming Back Door

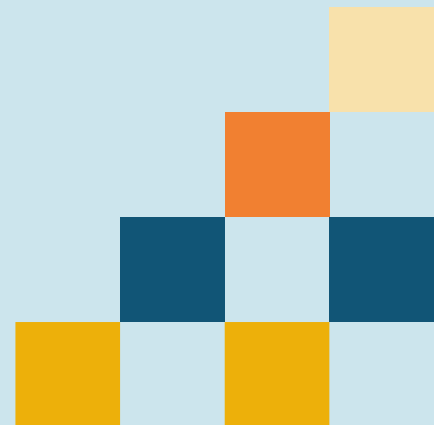
Bars, Gates, Walls, Drive Through

- Are they visible?
- What do they cover and where are the gaps?
- Rolltop garage door may not go to the ceiling.
- What about your walls?



How about a “Safe” or cabinet?

- What kind of a safe or cabinet?
 - How is it attached permanently?
 - Is it bolted to the floor?
- Sensors inside the safe for vibration or opening. Vibration sensors are not expensive yet are hardly ever seen in use.
- Is it actually locked?
- How hard is it to move a safe?



Adjacent Business

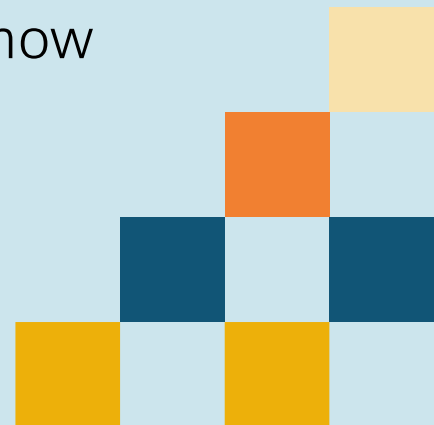
- How secure is your neighbor?
- What kind of wall separates suites in the row building?
- How accessible is the overall building?



Social Media / Internet Presence

- Who has seen fun pictures behind the counter?
- Take your kid or even toddler to work day?
- Fun videos or reels in the RX section?

- KEEP IT UP FRONT – NOT BEHIND THE COUNTER.
- DO NOT have pictures on social media or websites that show pharmacy layout and possible security measures clearly.

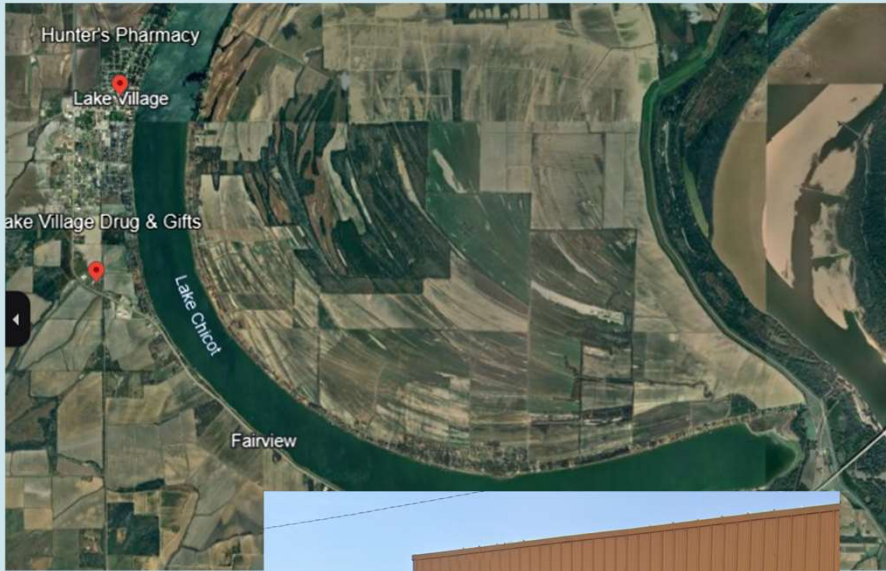


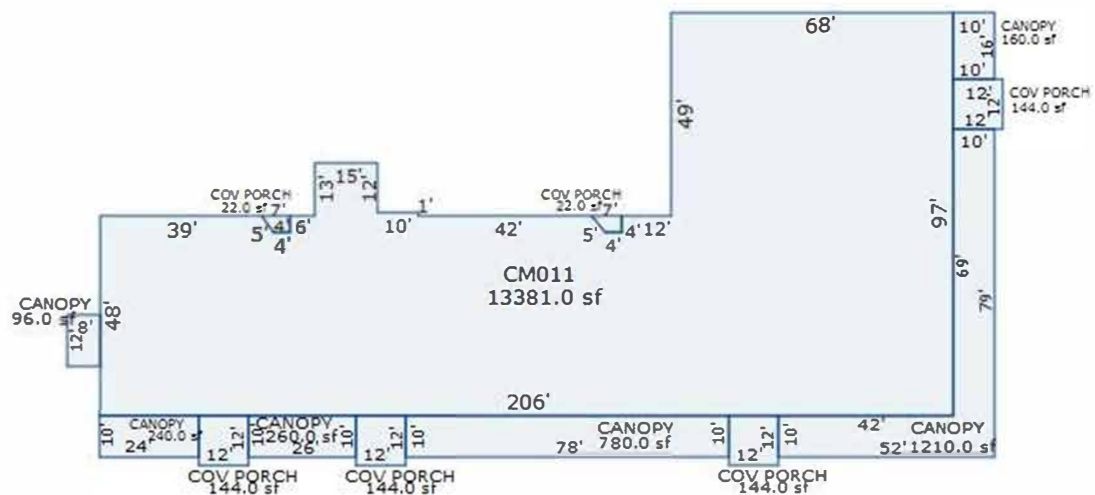
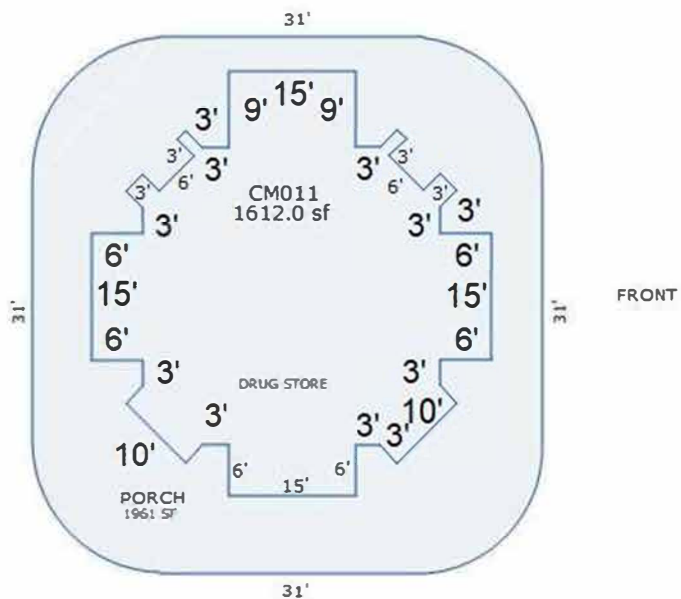
Loss Prevention Tools

- How many employees are in the store during open hours?
 - Huge deterrent against robberies.
- Who do you allow behind the counter?
 - HVAC guy showing up to check air flow?
 - Grocery Store Manager?
 - Family of your coworkers?
 - “Pharmacist” thinking about applying for a job there?
- VERIFY Licensure/Registration on anyone you are looking at employing.



Who Uses Google Earth, Streetview?





What is in your state law?

- Enhancements on crimes against healthcare workers?
- Enhancements on crimes against pharmacies?

Stricken language would be deleted from and underlined language would be added to present law.
Act 313 of the Regular Session

1 State of Arkansas
2 94th General Assembly
3 Regular Session, 2023

A Bill

SENATE BILL 344

4
5 By: Senator K. Hammer
6 By: Representative L. Johnson

For An Act To Be Entitled

7
8
9 AN ACT TO REQUIRE POSTING OF A WRITTEN NOTICE THAT
10 ATTACKING A HEALTHCARE PROFESSIONAL IS A FELONY; TO
11 ALLOW A HEALTHCARE PROFESSIONAL TO USE A WORK ADDRESS
12 WHEN REPORTING CERTAIN OFFENSES; AND FOR OTHER
13 PURPOSES.

AN ACT TO AMEND THE LAW CONCERNING COMMERCIAL BURGLARY; TO CREATE AN ENHANCED PENALTY FOR COMMERCIAL BURGLARY OF A PHARMACY; AND FOR OTHER PURPOSES.

- SECTION 1. Arkansas Code § 5-39-201(b), concerning commercial burglary, is amended to add an additional subdivision to read as follows:
- (3)(A) A person who commits commercial burglary in which the commercial occupiable structure is a pharmacy as defined in § 17-92-101 is subject to an enhanced sentence of an additional term of imprisonment of five (5) years.
- The language goes on to explain that this enhancement in consecutive to any other sentence imposed and is ineligible to receive earned release credits.
- <https://www.arkleg.state.ar.us/Home/FTPDocument?path=%2FACTS%2F2023R%2FPublic%2FACT837.pdf>

Questions?



Contact Information

John Clay Kirtley, PharmD, FAPhA

Executive Director, Arkansas State
Board of Pharmacy

john.kirtley@arkansas.gov